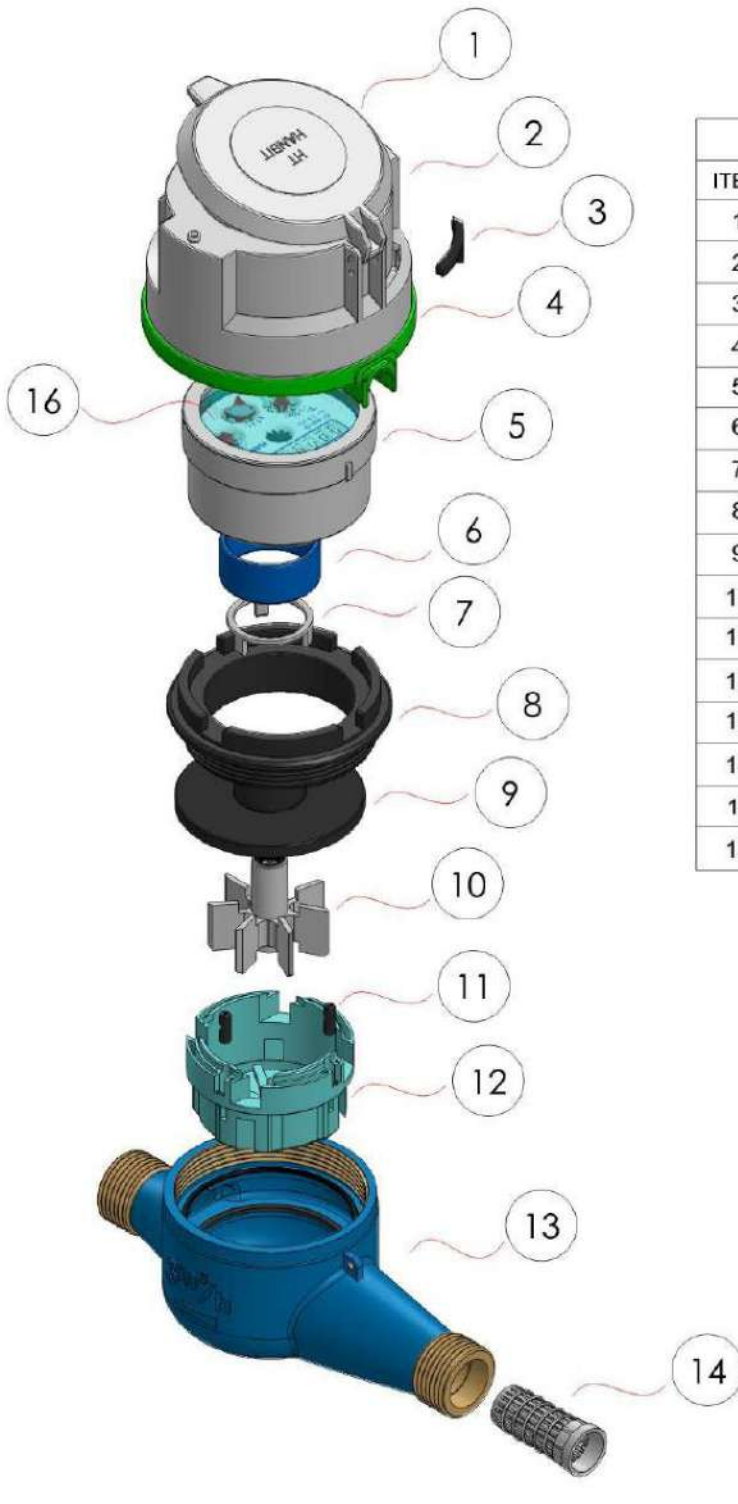


## Technical Data

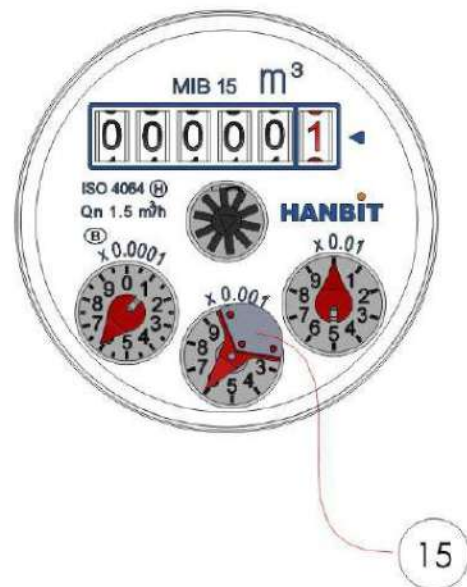
Nominal Size DN (INCH)	15mm (1/2")				20mm (3/4")	
Measuring Range — Accuracy Class	R50	R100	Class B	Class C	R50	Class B
Minimum Flow Rate (Q1)	32 l/h	16 l/h	30 l/h	15 l/h	50 l/h	50 l/h
Transitional Flow Rate (Q2)	52 l/h	26 l/h	120 l/h	22 l/h	80 l/h	200 l/h
Nominal Flow Rate (Q3)	1.6 m <sup>3</sup> /h	1.6 m <sup>3</sup> /h	1.5 m <sup>3</sup> /h	1.5 m <sup>3</sup> /h	2.5 m <sup>3</sup> /h	2.5 m <sup>3</sup> /h
Maximum Flow Rate (Q4)	2.0 m <sup>3</sup> /h	2.0 m <sup>3</sup> /h	3.0 m <sup>3</sup> /h	3.0 m <sup>3</sup> /h	3.1 m <sup>3</sup> /h	5.0 m <sup>3</sup> /h
Starting Flow	≤10 l/h				10-12 l/h	
IP Rating	IP68				IP68	
Maximum Reading	9999 & 99999				9999 & 99999	
Maximum Working Pressure	16 bar				16 bar	
Pressure Loss (Q3)	0.63 bar				0.63 bar	
Maximum Operating Temperature	50°C				50°C	

708, Harikrishna Complex, Opp. Kothawala Flats, Ashram Road  
 Pritamnagar, Ahmedabad -380 006, Phone 78 2000 67 05/06.07  
 M.: 9825500360 / 9377701360 Fax: 079 - 2657 3762

E Mail: [newwayelectronics@rediffmail.com](mailto:newwayelectronics@rediffmail.com),  
[www.newwayelectronics.co.in](http://www.newwayelectronics.co.in)



PART LIST		
ITEM	NAME	MATERIAL
1	Lid	PP
2	Cover	PP
3	Lock for Cover	Nylon
4	Anti Removal Part 1	PP
5	Register Unit	Xylon,Brass,SUS
6	Magnetic Shield	Steel
7	Magnetic Shield Support	ABS
8	Press Plate	Nylon
9	Upper Chamber	Nylon
10	Vane Wheel	PP
11	Chamber's Regurator	POM
12	Chamber	ABS
13	Body	Bronze
14	Strainer	Polene
15	Inductive Pulse	SUS
16	Glass	PC



708, Harikrishna Complex, Opp. Kothawala Flats, Ashram Road  
 Pritamnagar, Ahmedabad -380 006, Phone 78 2000 67 05/06.07  
 M.: 9825500360 / 9377701360 Fax: 079 - 2657 3762

E Mail: [newwayelectronics@rediffmail.com](mailto:newwayelectronics@rediffmail.com),  
[www.newwayelectronics.co.in](http://www.newwayelectronics.co.in)

## Design Features & Advantages

Inductive Pulse Output Water Meter

- Pre-equipped for AMR enables
- Bi-Directional prevent fraud and faulty installation
- IP68 Hermetic sealed register unit
- Magnetic tampering protection
- Built-in non-return valve as an optional feature
- Available for both internal & external regulators



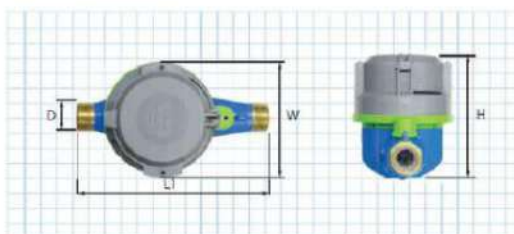
## Retrofit Smart Water Metering Device

Retrofit device is designed to leverage the existing water meter by transforming them into smart water meters. Available with various wireless communications Mbus (walk by), NBiot and LoRaWAN



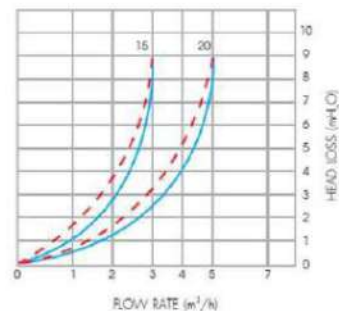
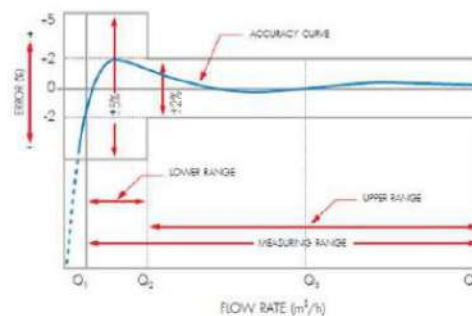
- Compatible with existing water meter
- Water Consumption analysis and billing remotely
- Module Configuration & Commissioning by using mobile app
- Maximum battery life 10 years depends on the frequency of data transmission
- NFC Interface allows configuration, settings of the emitting pulse and on site commissioning during installation
- Anti-Tampering Sealed
- IP68 Module

## Dimensions



Model and Size of Meter	Unit	M8 15 mm. (1/2")	M8 20 mm. (3/4")
Length	L1 mm.	165	190
Width	W mm.	90	90
Height	H mm.	112	114
Thread Size	D mm.	25.4	33.2
No. of Thread / Inch		14	11

## Characteristic Curve



708, Harikrishna Complex, Opp. Kothawala Flats, Ashram Road  
Pritamnagar, Ahmedabad -380 006, Phone 78 2000 67 05/06.07  
M.: 9825500360 / 9377701360 Fax: 079 - 2657 3762

E Mail: [newwayelectronics@rediffmail.com](mailto:newwayelectronics@rediffmail.com),  
[www.newwayelectronics.co.in](http://www.newwayelectronics.co.in)



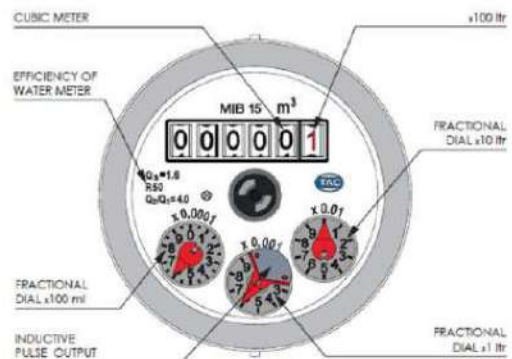
## INDUCTIVE PULSE OUTPUT WATER METER

TAC inductive pulse output water meter has advanced sensors utilize induction to detect the position and movement of a target affixed to a dial on the register unit of the water meter. Each pulse output represents a predetermined volume of water passing through the meter.

TAC water meter is a multiple jet type with a separate measuring chamber within the meter case it is included in the group of velocity meters mainly for domestic consumers. Two key components drive the water meter to count water consumption.

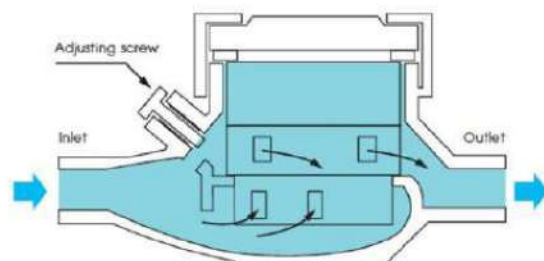
### Hermetic Sealed Register Unit ( IP68 )

It is water proof, resistant against condensation or fogging condition on the dial face. This register unit is designed to generate pulses at a high rate to provide data when set up to read with AMR ( Automatic Meter Reading ) module. The volume of water that each pulse represents is dependent on the positioning of the induction on the dial and sensor. TAC water meter pulse output 1 pulse can count for every 1, 10 & 100 liter of water.



### Measuring Chamber

In the multijet water meter the water impacts the vane wheel in multiple channels through measuring chamber. This method achieves a more balanced operation of the impeller and in theory a greater durability of the meter. Multijet water meter are very reliable providing a long life, adequate for hard water or water suspended with particles. Additionally, multijet meter are behave better at low flow rates and have lower starting flow.





INDUCTIVE PULSE OUTPUT WATER METER

ISO 4064 Measuring Range R50 & R100



M-Bus

LoRa

NB-IoT

708, Harikrishna Complex, Opp. Kothawala Flats, Ashram Road  
Pritamnagar, Ahmedabad -380 006, Phone 78 2000 67 05/06.07  
M.: 9825500360 / 9377701360 Fax: 079 - 2657 3762

E Mail: [newwayelectronics@rediffmail.com](mailto:newwayelectronics@rediffmail.com),  
[www.newwayelectronics.co.in](http://www.newwayelectronics.co.in)